

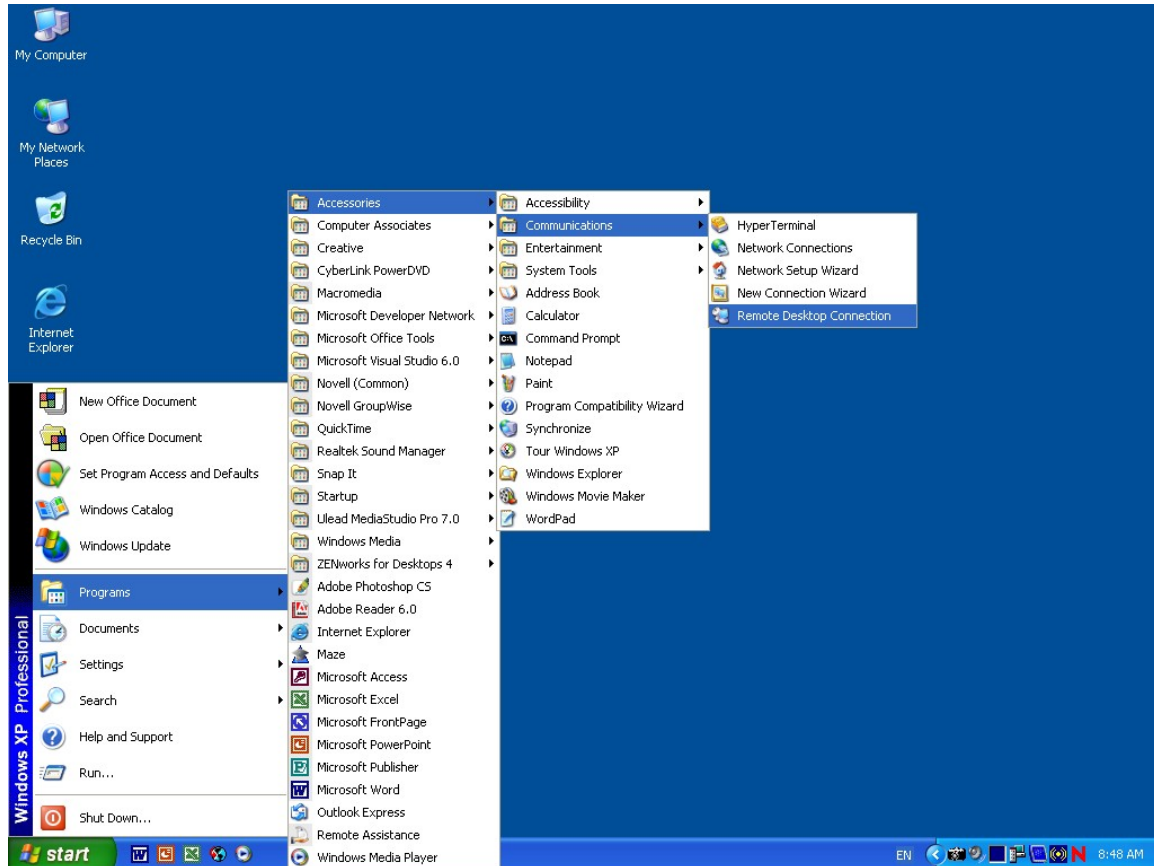
STAFF ACCESS FROM HOME – TERMINAL SERVICE INSTRUCTIONS

The Microsoft Windows XP operating system provides the software required to connect to the St Hildas network.

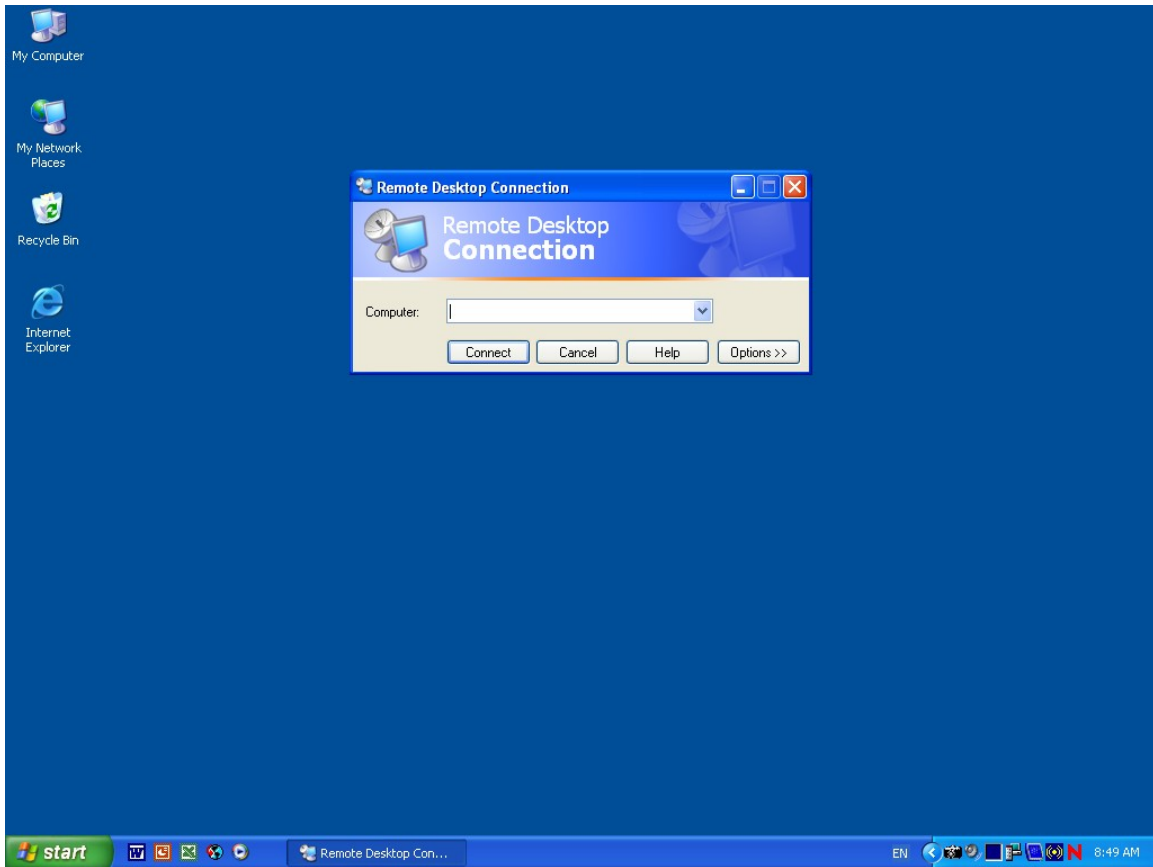
Step 1

Open the Remote Desktop Connection application

Select Programs → Accessories → Communications → Remote Desktop Connection

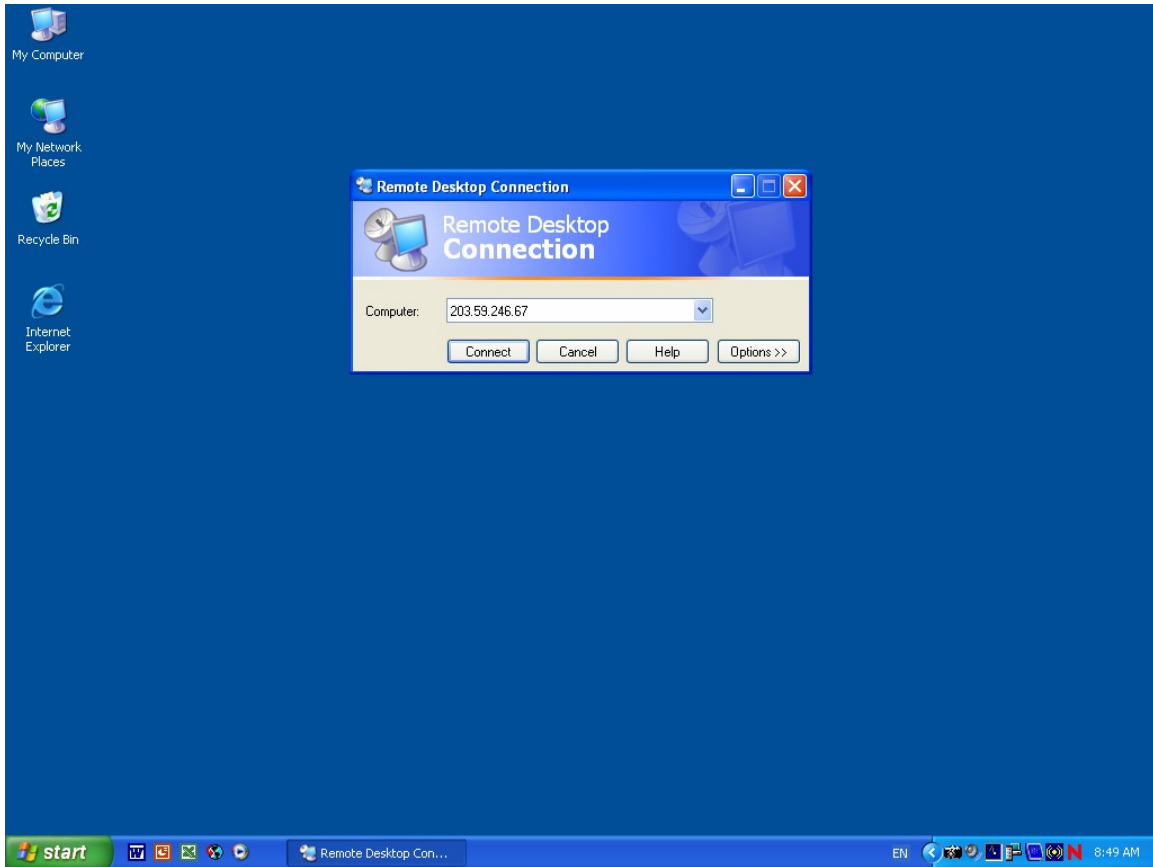


The following popup window is displayed:



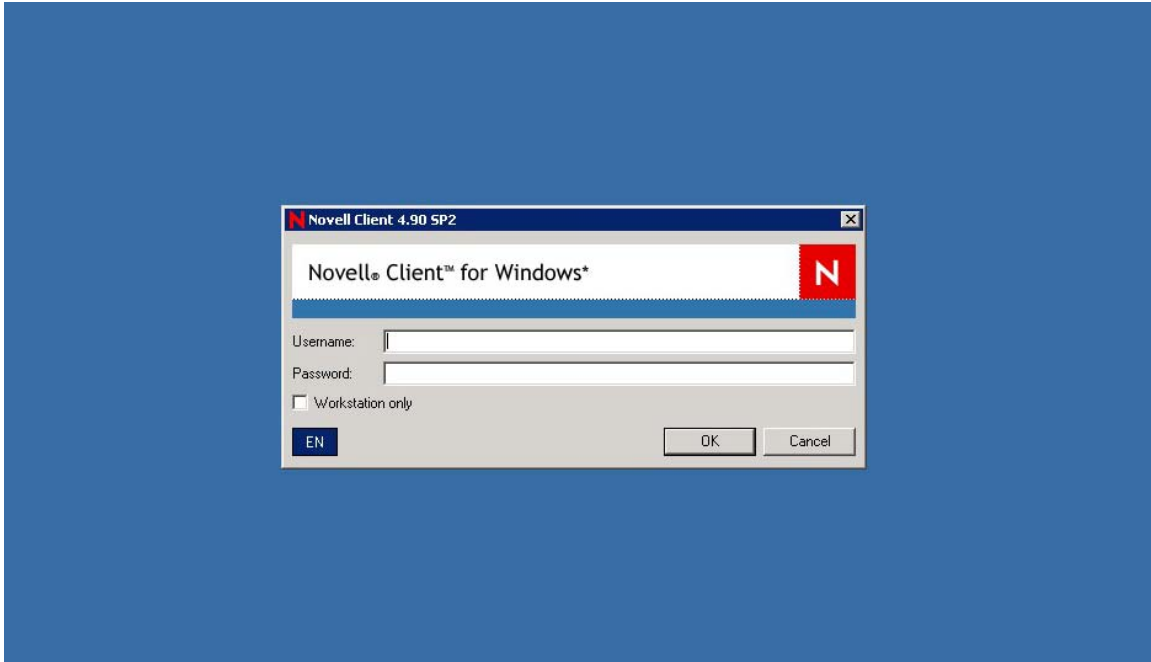
Step 2

Please enter the following IP Address: 203.59.246.67



A Remote Desktop Connection will be made to the school. The familiar Novell dialog box will appear prompting for Username and Password.

Please enter the Username and Password you would normally use within the school.



The Terminal Server will log you into the St Hildas Network. Please ensure that you log out each time you make a connection.

